

153 communes
1 866 km²
272 814 habitants
146 hab/km²
7 EPCI
5 départements
Région Auvergne - Rhône-Alpes

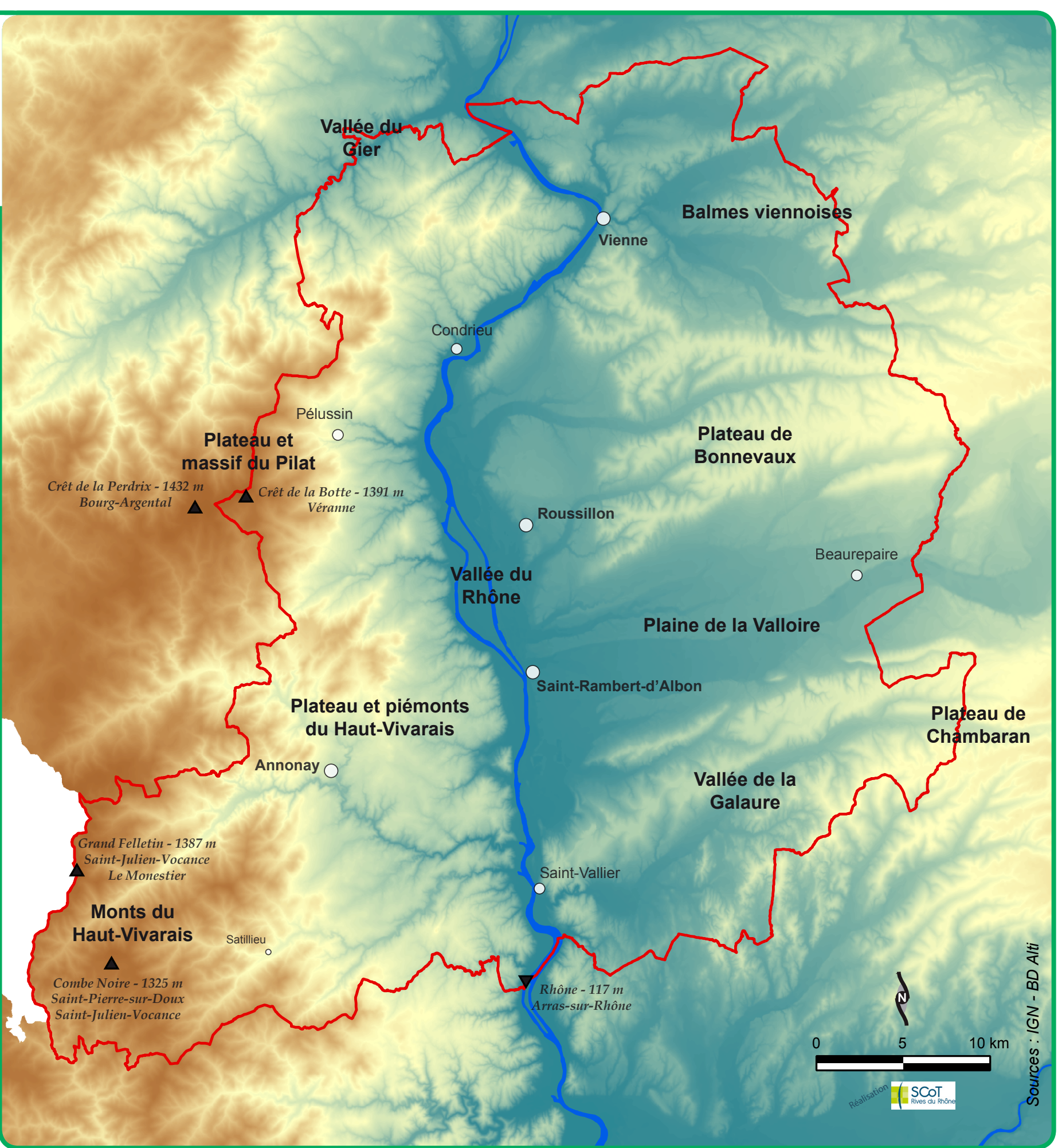
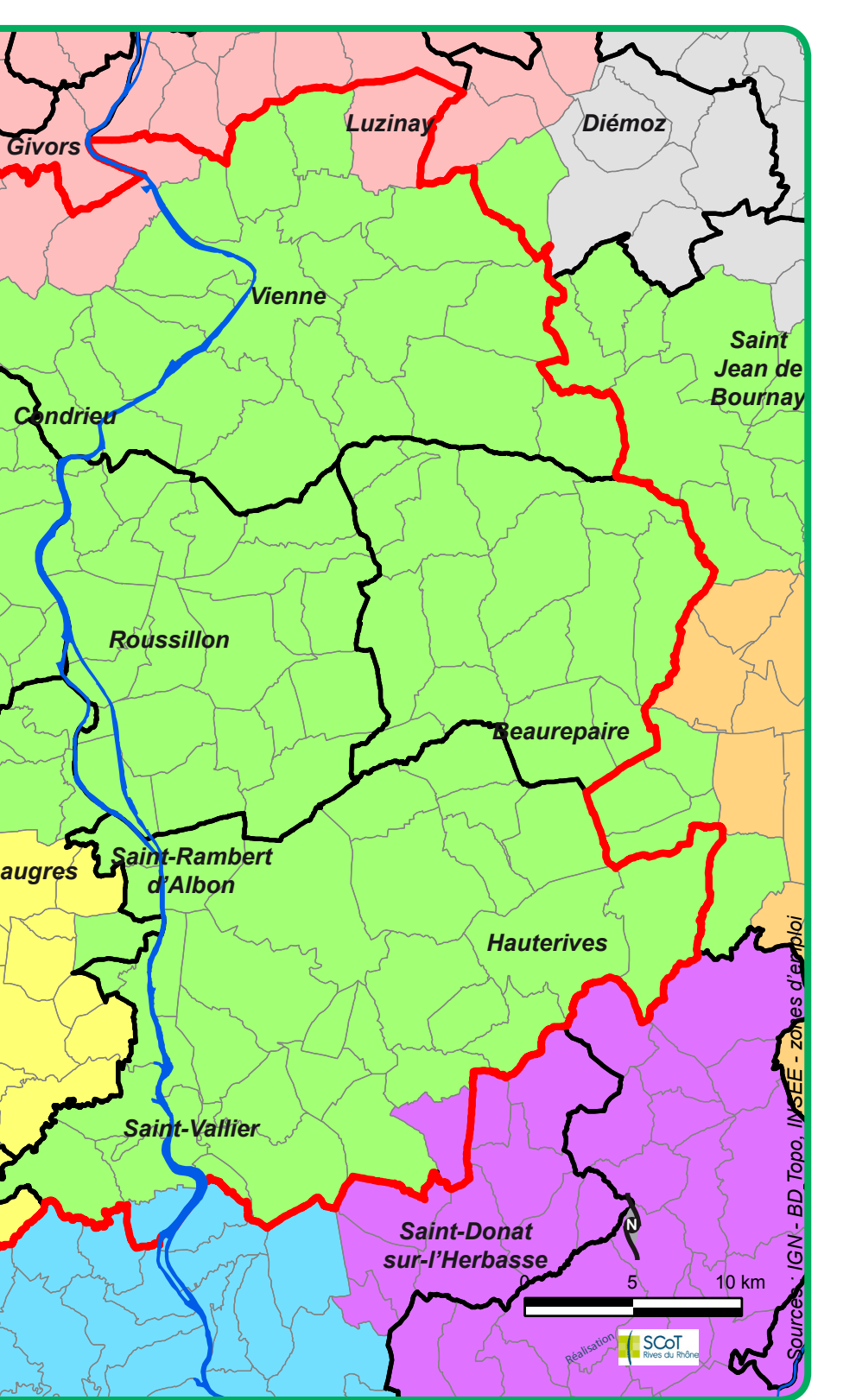
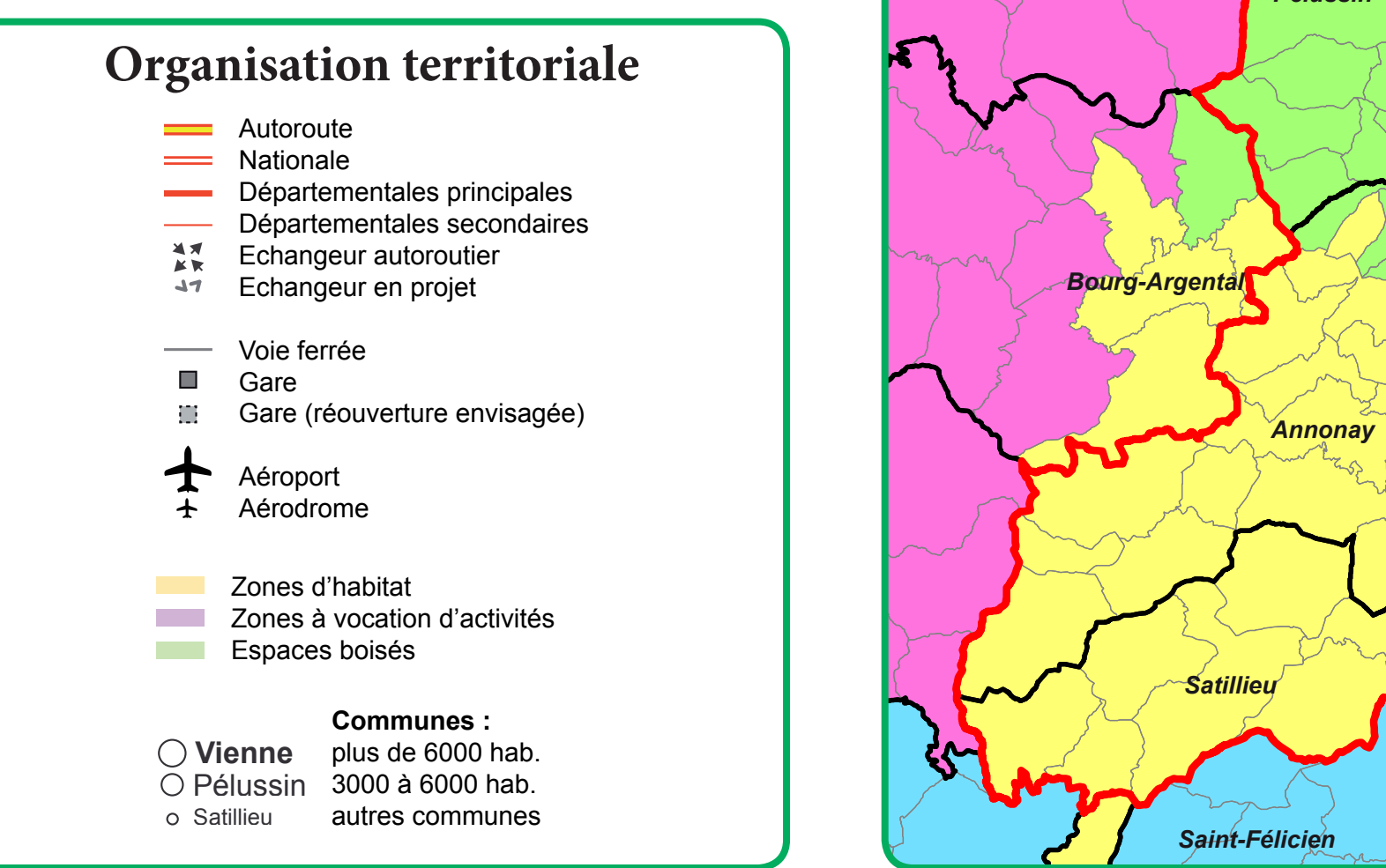
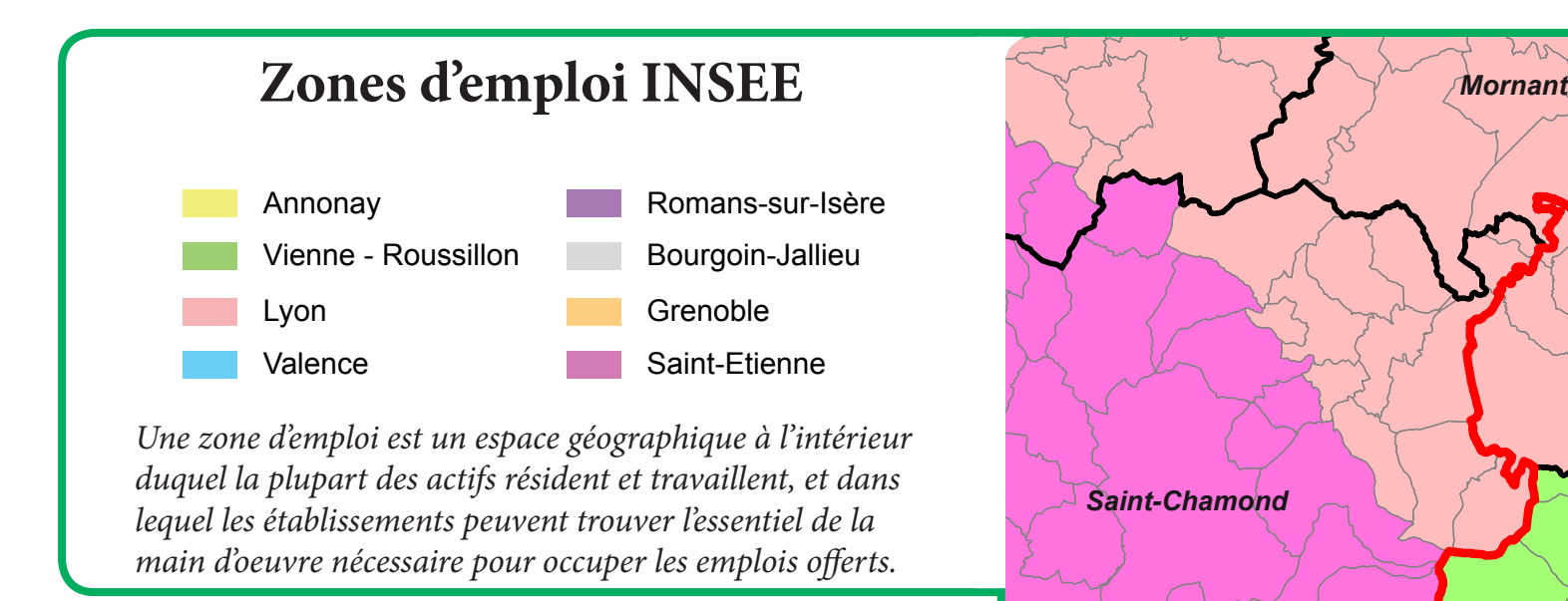
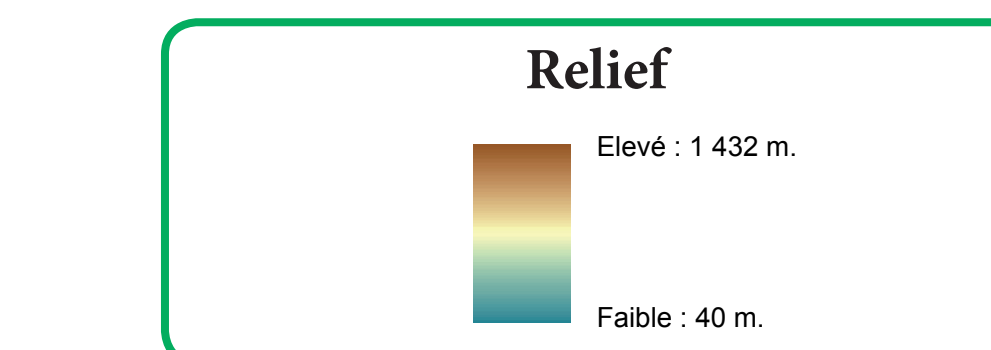
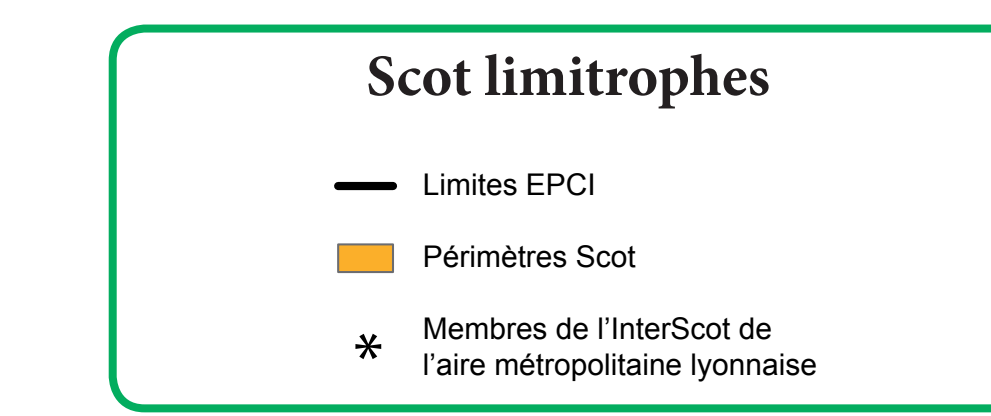
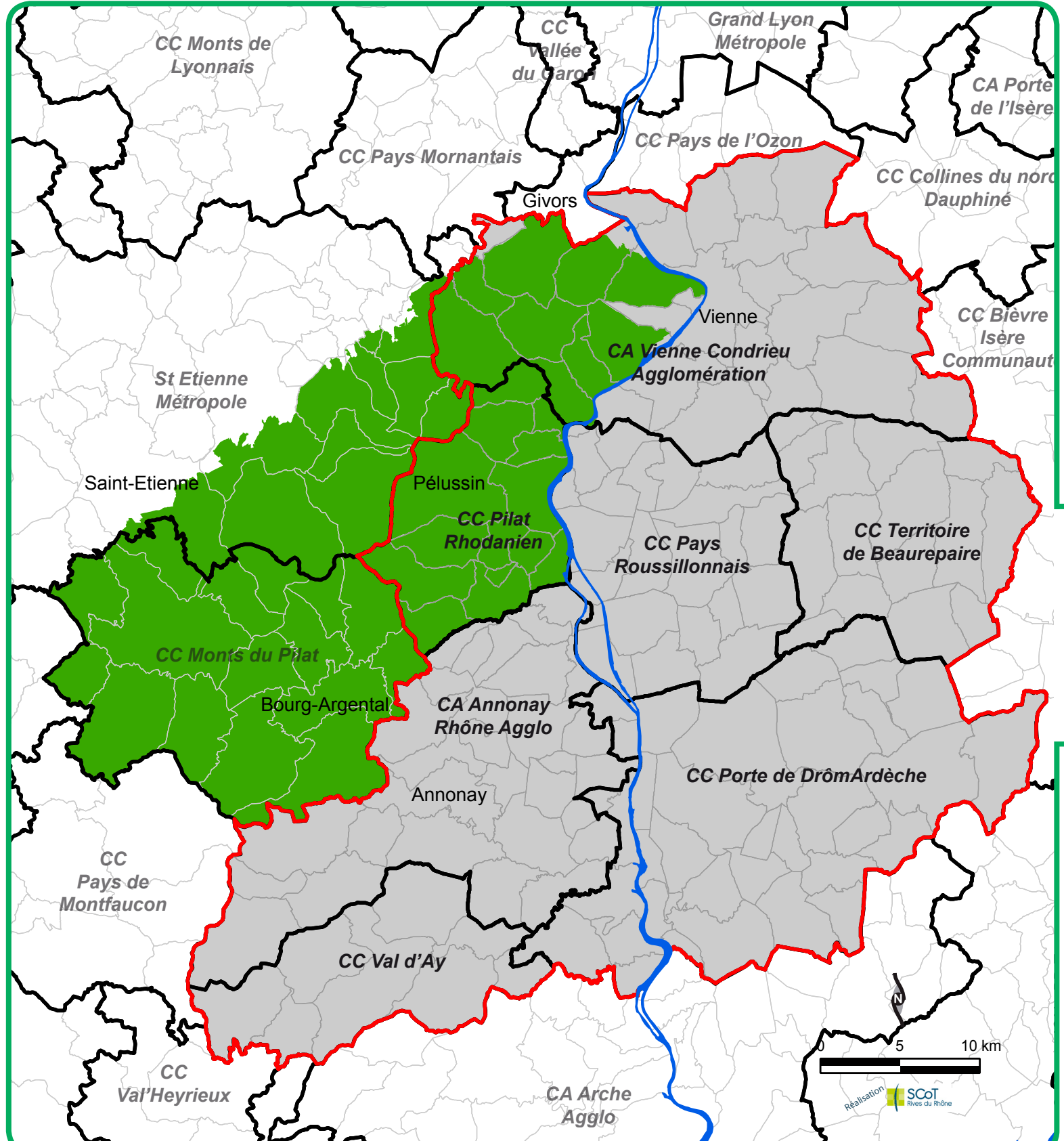
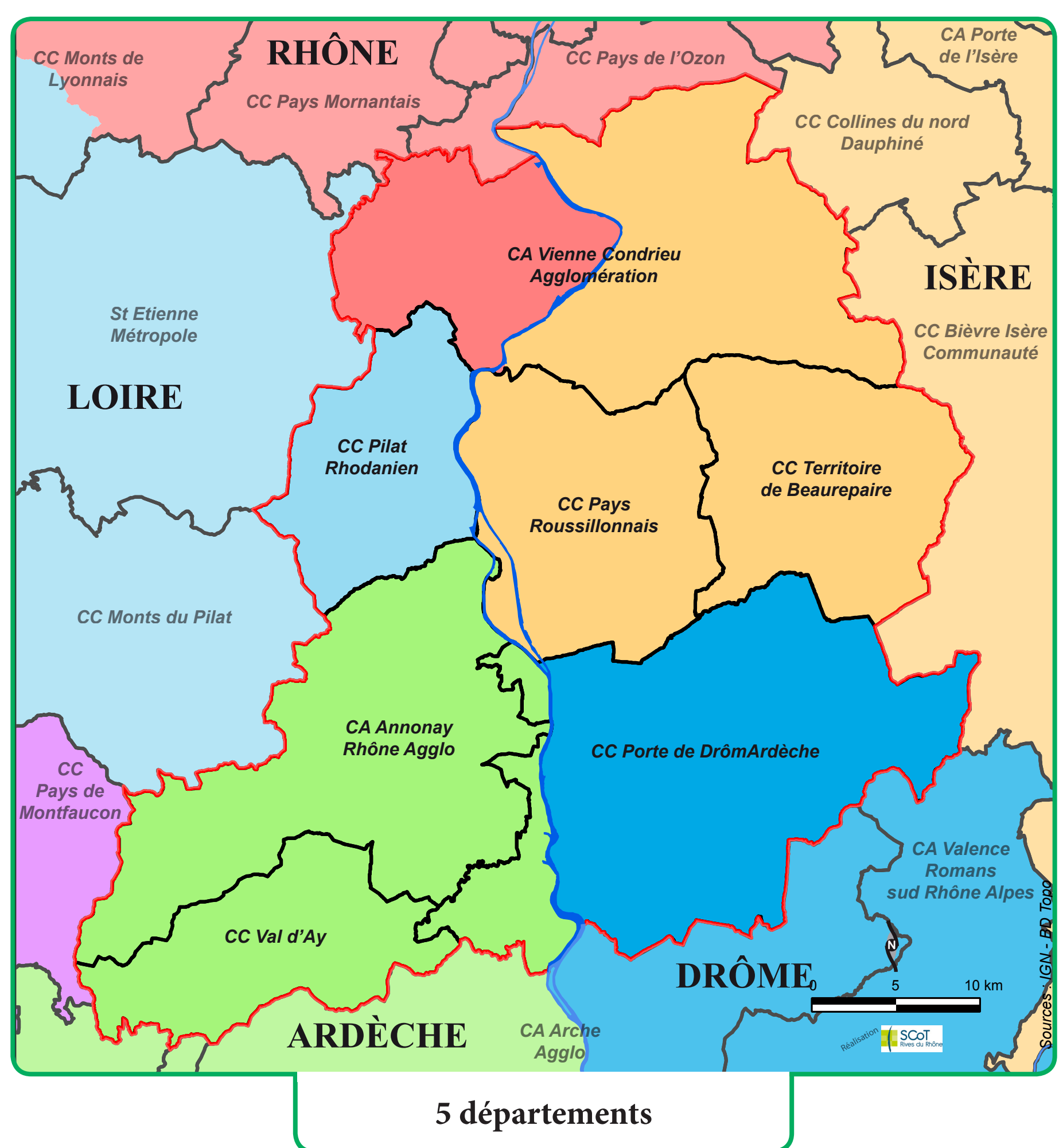
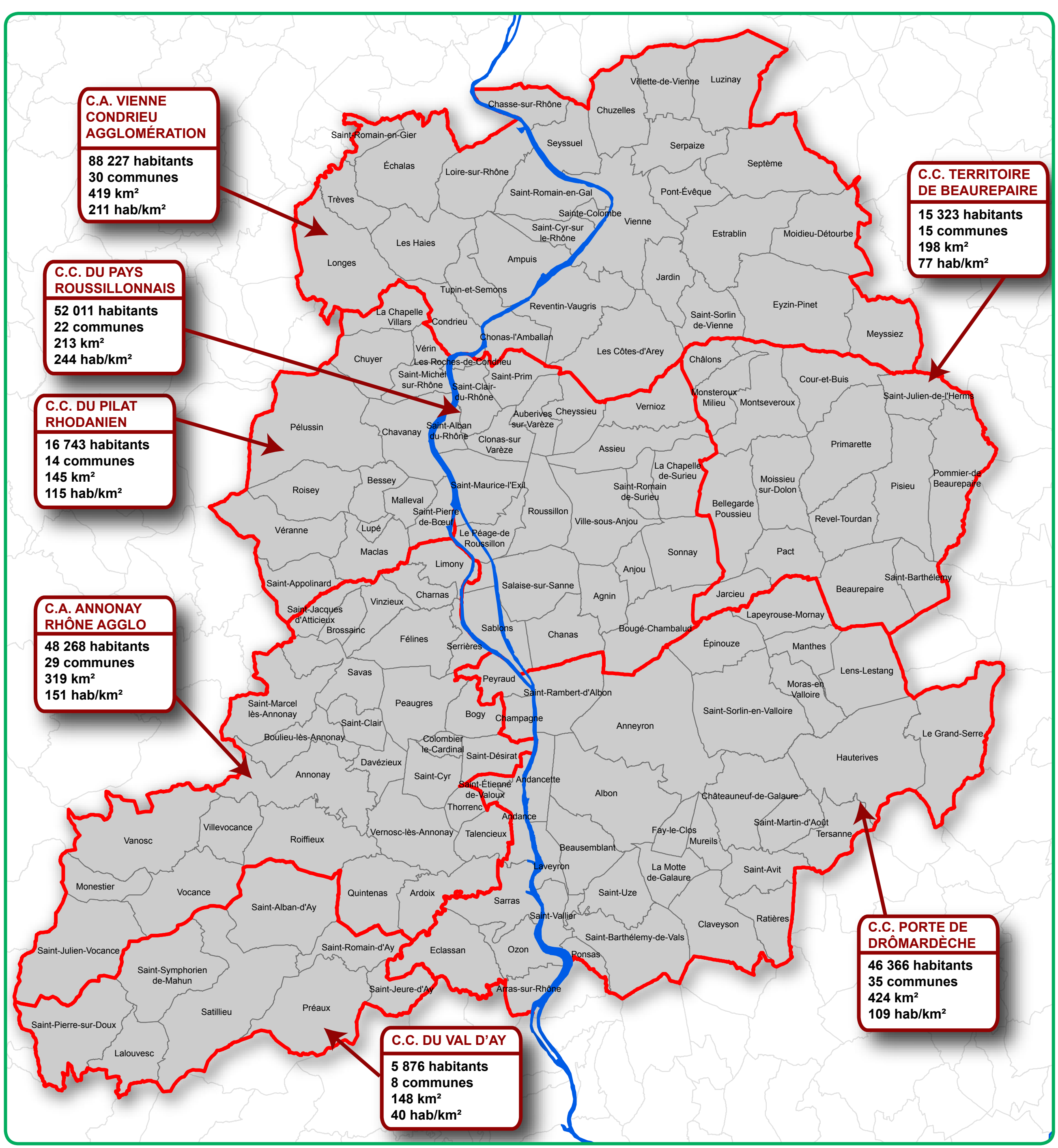
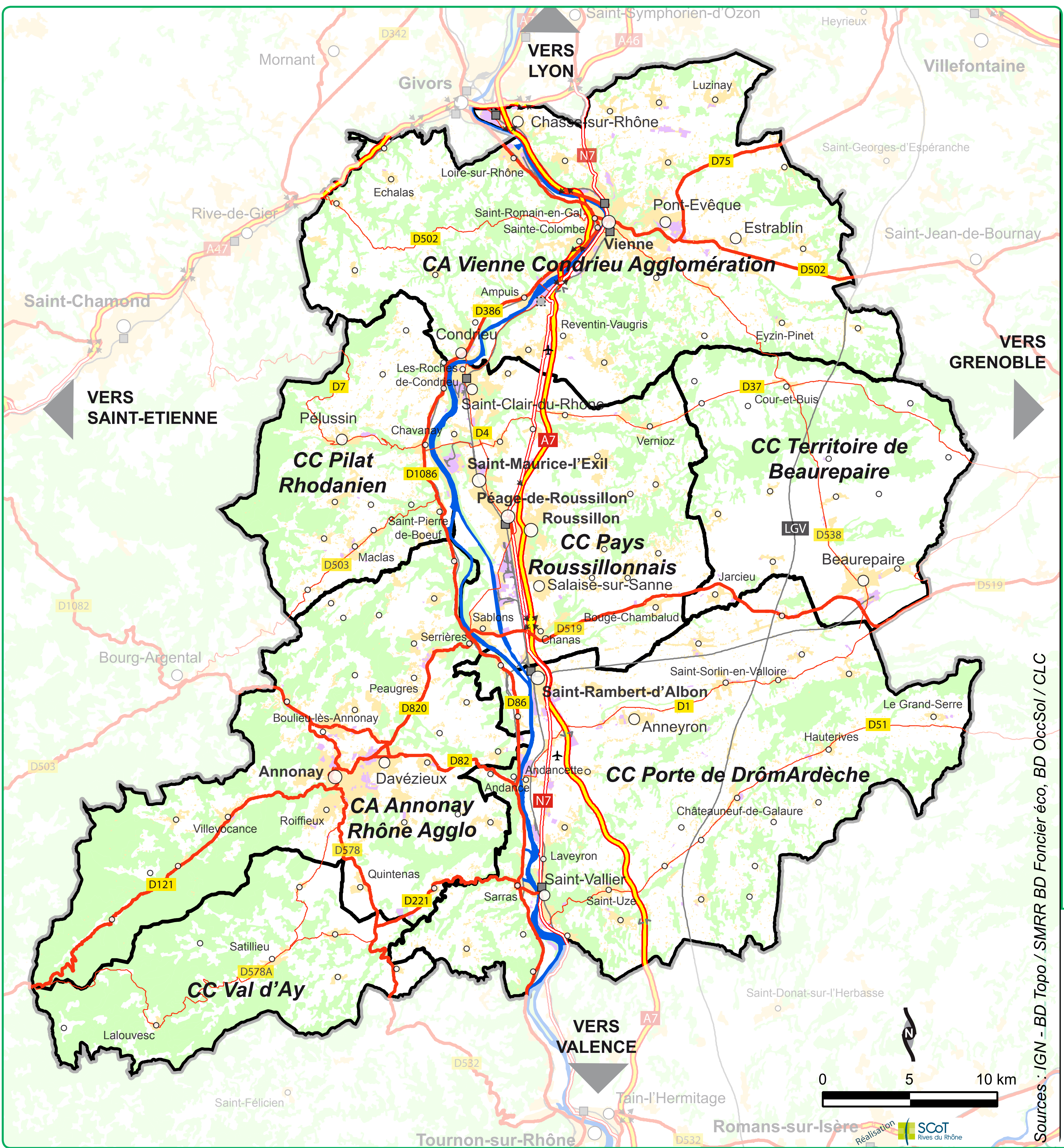
Evolution de la population depuis 1968

1968 : 183 770
1990 : 219 636
1999 : 233 130
2010 : 263 179
2015 : 272 814

Distance Nord-Sud : 58 km
Distance Est-Ouest : 54 km

Altitude max : Véranne : 1 391 m
Altitude min : Arras-sur-Rhône : 117 m

Commune :
la plus peuplée : Vienne - 29 162 hab.
la moins peuplée : Le Monestier : 57 hab.



Sources : IGN - BD Topo / SMRR BD Forcier éco, BD OccSol / CLC